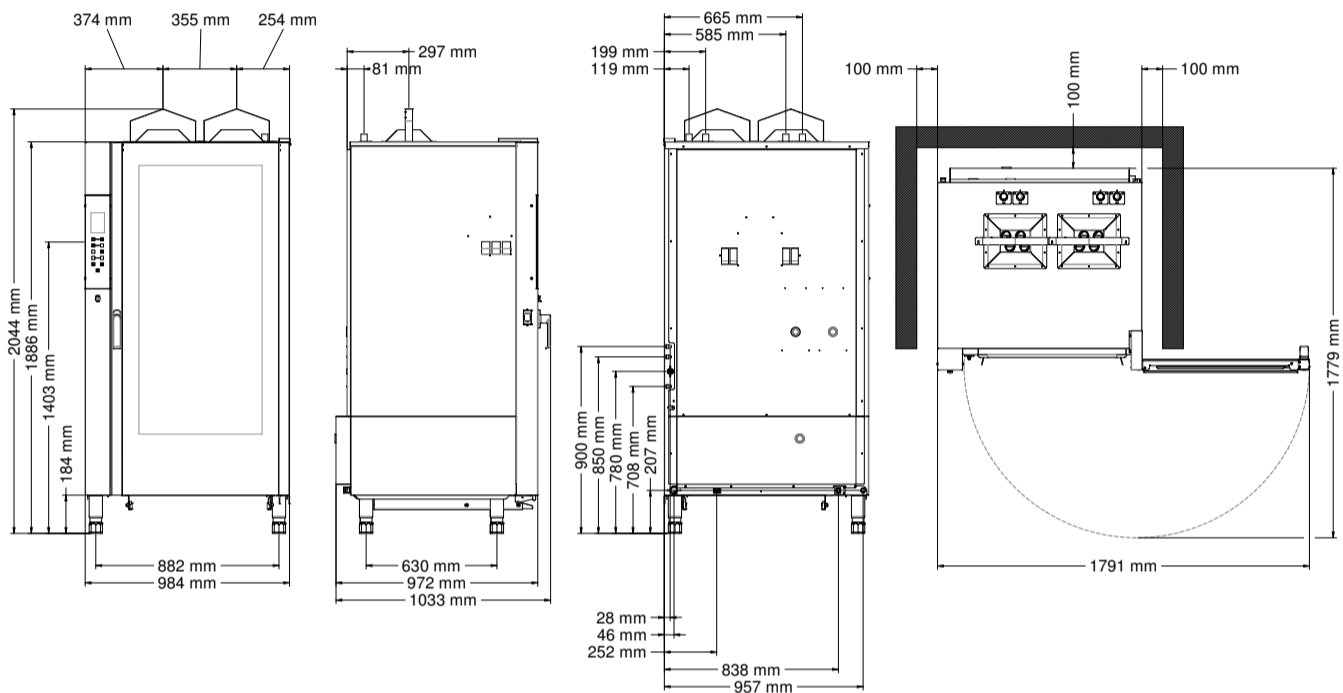


# CHF 1664 G TC



## ELECTRONIC GAS CONVECTION OVEN WITH TOUCH CONTROL AND STEAM



### DIMENSIONAL CHARACTERISTICS

Dimensions (WxDxH mm)	984	1033	2044
Weight (kg)	239,8		
Distance between rack rails (mm)	80		

### Electrical features

Thermal supply (kW)	30
Frequency (Hz)	50/60
Voltage (V)	AC 230
N° motors	5 bidirectional
Boiler (kW)	/
Protection against water	IPX4

### EQUIPMENT

Cardboard box dimensions with pallet (WxDxH mm)	1200	1200	2132
Removable trolley with handle and wheels with brakes	Yes		
Predisposition for manual + automatic washing*	Yes		
Cable	Single-phase [3G 1,5] - L=1600 mm		
Predisposition of the heart probe	Yes		
USB port	Yes		

### Functional features

Power	Multi-gas (methane test)
Capacity	16 plates/grids (600x400 mm)
Type of cooking	Ventilated
Steam	Direct with automatic adjustment using the touch-switch with 10-position display
Cooking chamber	Acier AISI 304
Temperature	30 - 260°C
Temperature control	Digital probe
Control panel	Touch Control-lateral
N° programs	240
Programmable cooking steps	9
Pre-heating temperature	180°C
Pre-heating function	Available
Door	Side opening with hinges on the right Ventilated Control glass
Feet	adjustable

### PLUS

<b>USB port for loading and downloading recipes and HACCP data</b>
Menu with 240 storable recipes (40 configurable by Tecnoeka, 200 configurable by customers)
<b>Ignition timer with delayed start up to 23 hours and 59 minutes</b>
Control panel in 13 languages (Italian-French-English-German-Spanish-Romanian-Polish-Bulgarian-Ukrainian-Russian-Greek-Turkish-Czech)
<b>Grease discharge at the bottom of the baking chamber</b>
<b>Double connection for water inlet (normal and softened)</b>
Double raccord pour l'entrée de l'eau (normale et adoucie)
<b>All-glass door with satin-finish stainless steel side profiles</b>
<b>Rapid cooling of the baking chamber</b>
<b>Screen-printed glass control panel</b>
<b>Adjustable door hinges</b>
<b>Stainless steel cooking chamber</b>
<b>Recessed gasket</b>
<b>Forced cooling system for internal components</b>
IPX 4
<b>Predisposition for manual + automatic washing</b>
<b>CB Certification</b>